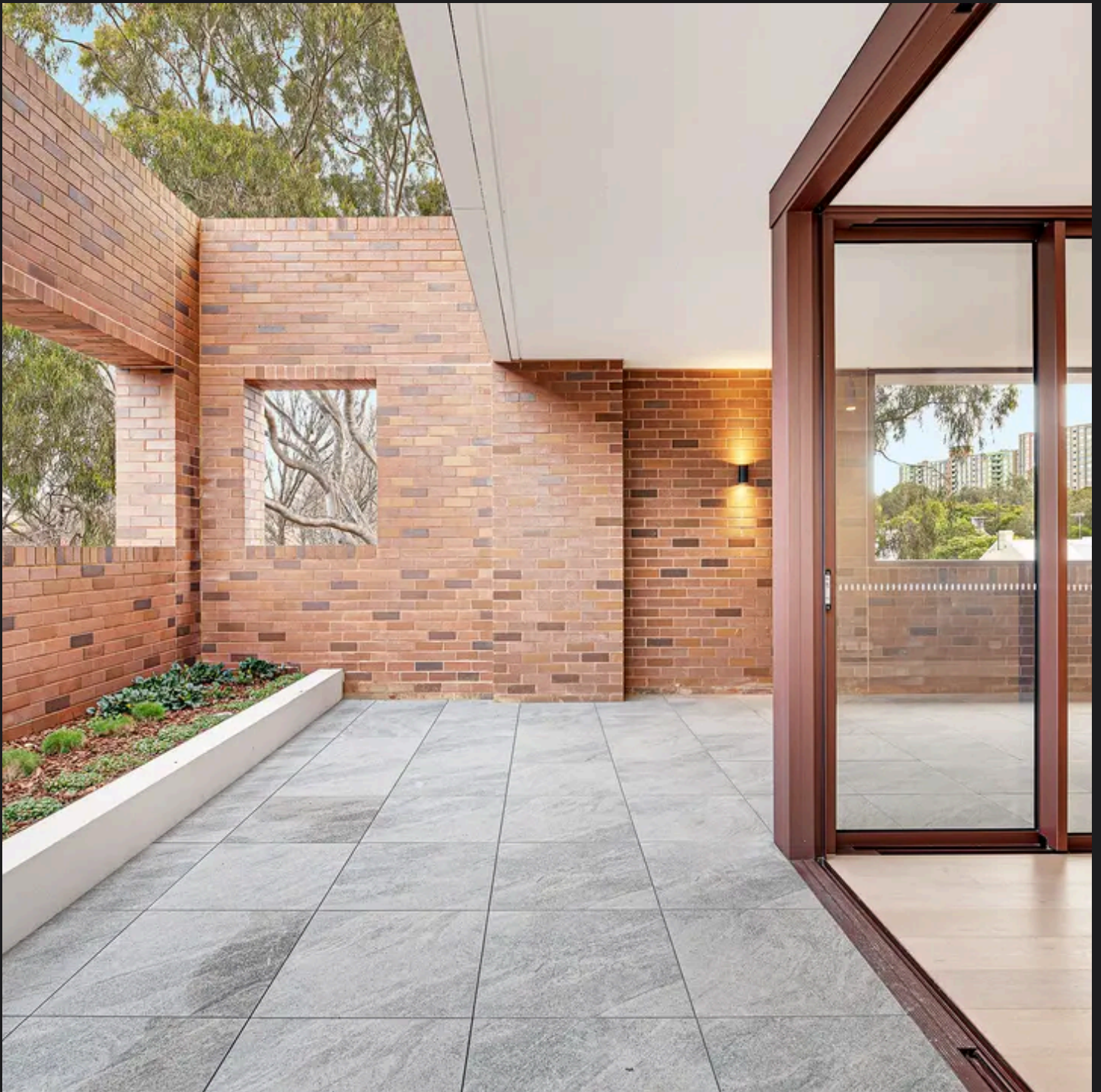


RayWhite®

TOUMA TAYLOR



**Unfurnished one bedroom apartment with
enormous private courtyard**

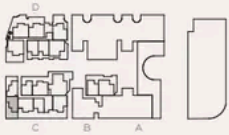
C1.03/14 Baptist Street, Redfern

1 bed 1 bath

Apartment C.1.03

1 BEDROOM
1 BATHROOM

INTERNAL 59m²
EXTERNAL 43m²
TOTAL 102m²



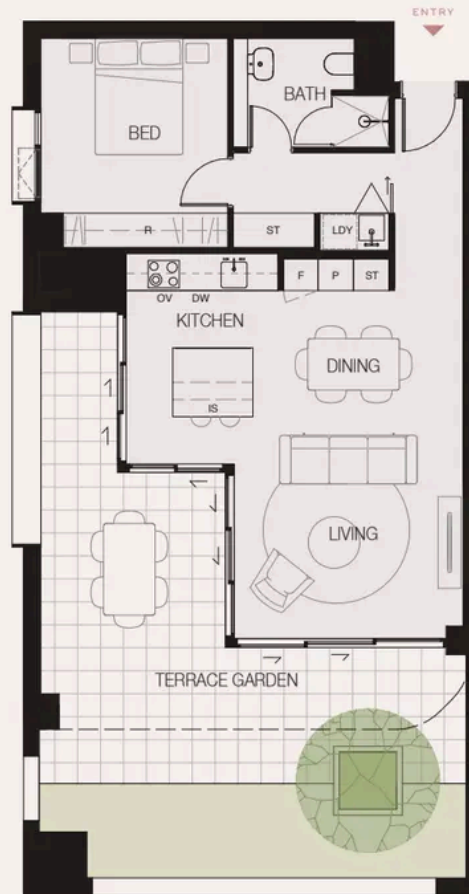
DW DISHWASHER
F FRIDGE
JB JOINERY BENCH
G GARDEN GATE
IS ISLAND BENCH
LDY WASHING MACHINE AND DRYER
OV COMBINATION OVEN
P PANTRY
R WARDROBE
ST STORE
SU SHELVING UNIT
VU VANITY UNIT

WALL TYPES
LOW HEIGHT WALL
MID HEIGHT WALL
FULL HEIGHT WALL

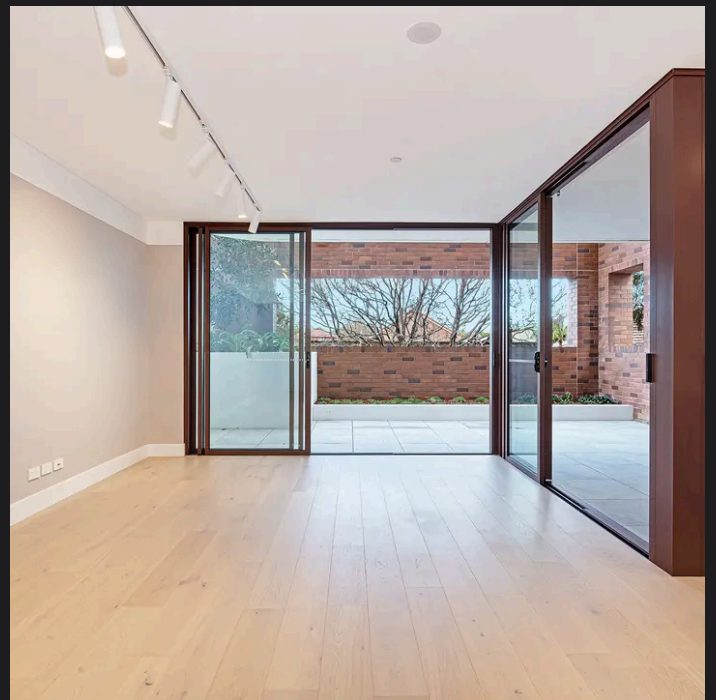
JOINERY
WALL UNITS ABOVE
UNDER BENCH UNITS

LANDSCAPING
LINE OF ROOF OVER
PLANTER FLUSH WITH RAVING
RAISED PLANTER
TREE

CALL 1800 554 556



SR.V



Corey Rotunno-Grant 0450 388 059
corey.rg@raywhite.com

Bianca Walton 0478 579 468
bianca.walton@raywhite.com

Disclaimer: All information provided is sourced from what we believe to be reliable sources. However, we do not guarantee its accuracy, and interested parties should conduct their own enquiries. Scale in metres. Indicative only. Dimensions are approximate.